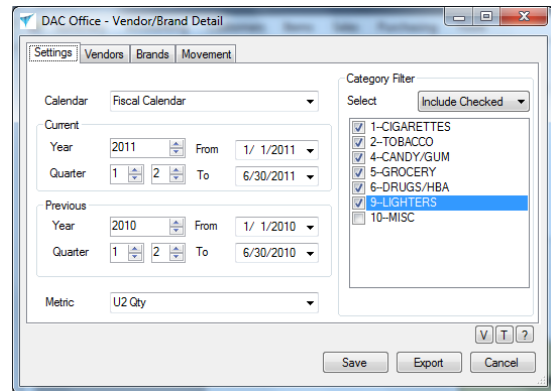


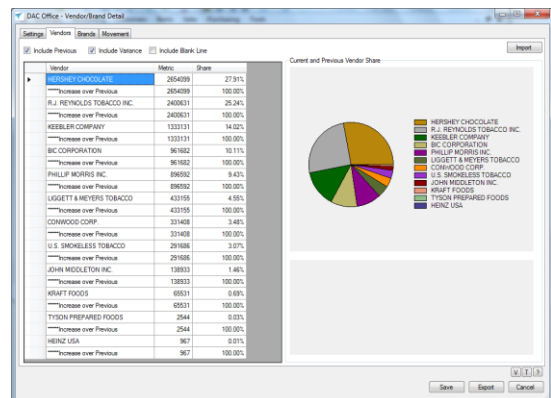
Overview

The Vendor Brand Detail template is a one page dashboard report that shows how vendors and brands compare to one another. Select the Calendar type and then enter a date range. Select the same time frame from any previous year or compare to any date range you desire. Use the Category filter to include or exclude certain categories. Select the Metric to compare, Sales, Cost, Profit, Percent, U2 Quantity or U1 Quantity.



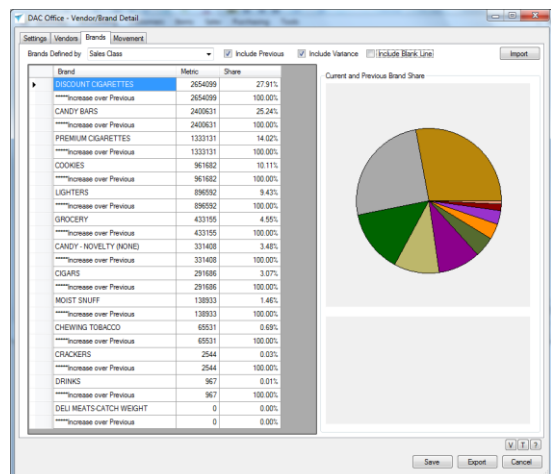
Vendor Tab

Click on the Vendors tab to select how the vendors will display in the grid. Data won't be initially displayed so click the Import button to populate the grid. Always click the import button after making changes. Click the Save button to save your settings.



Brand Tab

Click on the Brand tab to select how the brand is stored in your system. Some distributors use the Sales Class to assign the brand, others use Product Class or Product Heading. Select the Brand from the drop-down list and click the import button to review the brands.



Weekly Movement

Click on the Movement tab to see the movement by brand. Click the Import button to review the movement data in the grid.

Brand	Metric	W2	W3	W4	W5	W6	W7	W8	W9	W10	W11	W12	W13
DISCOUNT CIGARETTES	2146941	4013	45204	284928	208605	259690	9210	-480	86428	200355	29413	171734	181234
CANDY BARS	1758558	17736	45504	237779	178639	234177	5236	-996	74280	153215	22360	131453	151234
PREMIUM CIGARETTES	1583437	3741	28240	172358	128416	159358	300304	-49990	54586	122925	17964	106386	111234
COOKIES	1237941	10966	28080	167954	121644	154804	16717	-3001	51500	109920	16195	99706	101234
LIGHTERS	961682	23487	25388	134423	95010	128408	923		40398	75989	12193	72643	794234
GROCERY	451357	2854	8270	50315	35305	43475	-4		15488	28966	4250	27795	283234
CANDY - NOVELTY (NONE)	445151	2144	12225	64934	49903	63680			17285	41796	5080	36491	418234
CIGARS	331408	1012	7345	42720	33304	42280	50	-1	14286	30742	4613	26870	254234
MOIST SNUFF	291686	2870	5625	32327	25194	33859			11923	25116	3871	22021	318234
CHEWING TOBACCO	138933	932	2875	15858	12200	15800	59	100	5322	11164	1833	10610	168234
CRACKERS	95190	2365	1533	8276	6284	12072	19998	-2	3647	7146	1283	5459	58234
DRINKS	65531												
DELI MEATS-CATCH WEIGHT	2544	2230	200	71	3								

Exported Report

Click on the Export button to create an Excel spreadsheet. The report is a one page dashboard report showing the Top Vendors according to the metric and date range selected on the Settings tab. The top five brands are displayed in graphs, showing the current year in blue and the previous year in black.

